

Portable Linear Scanner, designed for shallow organs, Mammary gland, Thyroid, and Breast Imaging

FFsonic

UF-4000L6

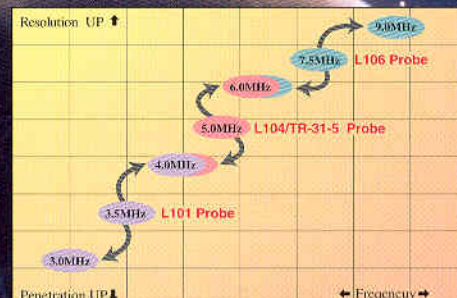
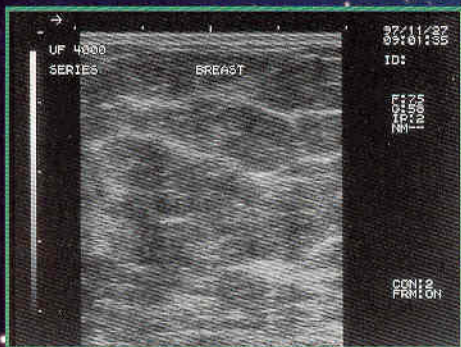
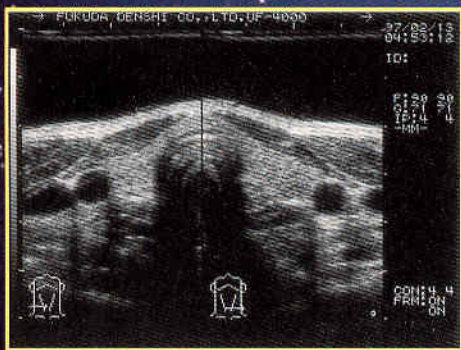
Diagnostic Ultrasound Imaging Equipment

Features

- Multi-Frequency Function enables selection of Tri-Frequencies with each Transducer. Maximum 9MHz imaging can be obtained.
- High-End Image Control Function as Zoom, Image Processing, and Various Focal Zones.
- Built-in Large Track Ball allows ease of use.
- B, B/B, M, and B/M Mode Display
- Compact design allows use at the Bedside.
- 7.5MHz Probe has Puncture Guide Line on the display, and optional Acoustic Coupler can be attached.

Applications

- Thyroid ● Mammary gland ● Musculoskeletal
- Sports Medicine ● Small Parts
- Vascular Imaging (Non-Doppler) ● Urology



Specifications

Scanning	FUT-L106A, Electronic Linear probe (Tri-Frequency 6.0/7.5/9.0MHz 38mm)	
Display mode	B (1 or 2 displays), B/M, M	
B-mode	Focus method	Transmitting 4 types focus
	Display Magnification	5 steps, variable
	Display Control	Up/Down reverse Right/Left reverse Image Shift, Image Zoom
M-mode	Display mode	Scroll
	Sweep speed	3 steps, selectable
Image Control	GAIN	Continuously variable
	STC	Near & Far
	Contrast	7 steps, selectable
	IP	7 steps, variable
Gray Scale	256 levels	
Monitor	7-inch, High-resolution	
Measurements and Calculations	General	Distance, Area, Circumference, Volume
	OB/GYN	Gestational week, Expected delivery Date, Fetal weight
	M-mode	Velocity, Heart rate
Automatic display	Year/Date/Time Probe frequency, focus information, Grey scale, Gain value, IP No. Contrast No., Frame Correlation Right/left inversion marks	
Power requirements	115/230VAC, 50/60Hz	
External Dimensions	33.2(W) x 31.2(D) x 26.0(H)cm	
Weight	Approx. 10Kg	

Optional Probes

FUT-L104	5.0MHz	60mm linear**
FUT-L101	3.5MHz	96mm linear**
FUT-TR31-5	5.0MHz	60mm Transrectal linear**

**Probes require optional Connection Kit1

Associated accessories and equipment

Connection Kit1: UF-4000-CK1, Acoustic coupler: FUT-ECW11-38 (for FUT-L106,-L106A)

Printer: FVP-800, Trolley: OT-104,

FUKUDA DENSHI reserves the right to change specifications without notice.



FUKUDA DENSHI CO., LTD.

39-4, Hongo 3-chome, Bunkyo-ku, Tokyo 113-8483, Japan

Tel:+81-3-5684-1455 Fax:+81-3-3814-1222

Distributed by: